



**innovair**

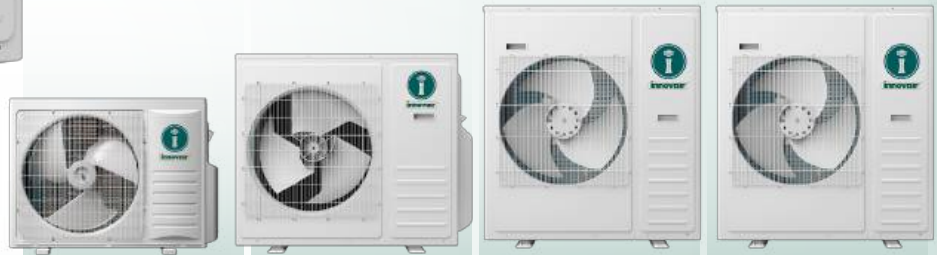


# MULTI INVERTER

Heat or Cool multiple living spaces

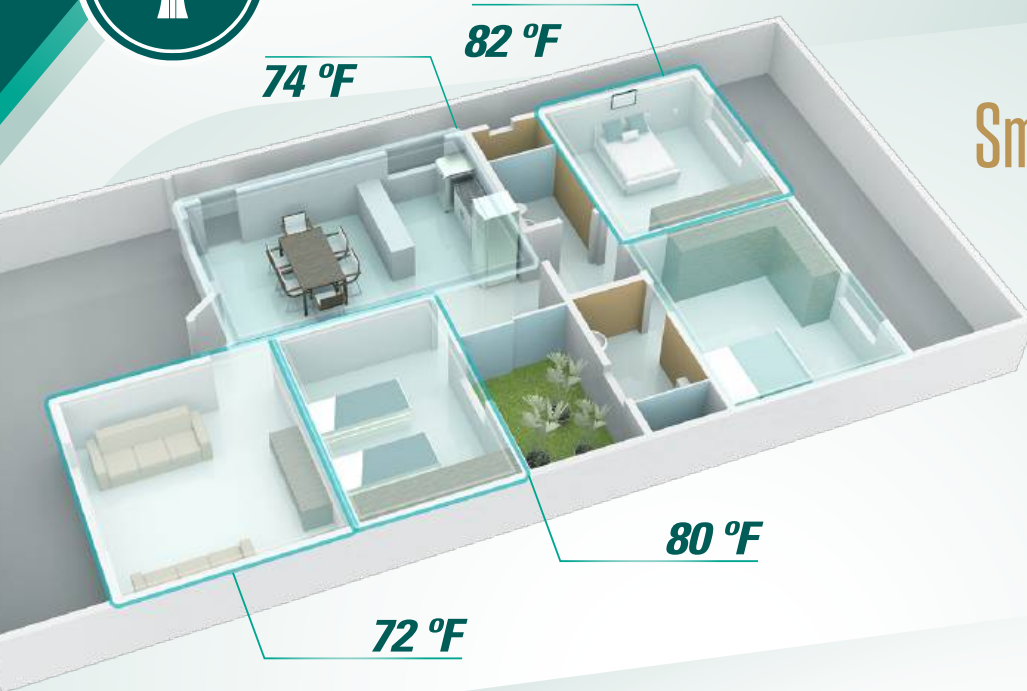


# OUTDOOR UNIT



Connections				up to 2 indoor units	up to 3 indoor units	up to 4 indoor units	up to 5 indoor units
Model Name				VOM18H7R2	VOM24H7R3	VOM36H7R4	VOM42H7R5
Refrigerant Type				R410A	R410A	R410A	R410A
Capacity	Cooling Capacity		95 °F Btu/h	18000	24000	32000	42000
	Heating Rated Capacity		47 °F Btu/h	18000	24000	36000	42000
	Heating Maximum Capacity		17 °F Btu/h	12200	15400	22800	24000
			5 °F Btu/h	20000	26000	40000	40000
	Cooling		kW	/	/	/	/
	Heating		kW	/	/	/	/
	Air Flow		CFM	1850	2350	3411	3411
EER	95 °F	Btu/ (W•h)	12.5	12.5	12.5	10.5	
EER		W/W	3.66	3.66	3.66	3.08	
COP	47 °F	W/W	3.45	3.66	3.37	3.17	
COP	47 °F	Btu/ (W•h)	11.77	12.49	11.50	10.82	
SEER		Btu/ (W•h)	22	22	21	20	
HSPF		Btu/ (W•h)	11	11	11	10.0	
Noise Level		dB(A) (Max)	55	59	59	63	
Guaranteed Operating Range	Cooling	°F	14~114.8	14~114.8	14~114.8	14~114.8	
	Heating	°F	-13~75.2	-13~75.2	-13~75.2	-4~75.2	
Compressor	Type		ROTARY	ROTARY	ROTARY	ROTARY	
Power		V/Hz/Ph	208/230 50/60 1	208/230 50/60 1	208/230 50/60 1	208/230 50/60 1	
Power input	Cooling	95 °F W	1440(510~2610)	1920 ( 420 ~2640 )	2550(690~5010)	4020(660~5550)	
	Heating	47 °F W	1530(450~3510)	1920 ( 420 ~4020 )	3120(600~6000)	3870(540~6450)	
Rated current	Cooling	95 °F A	6.5	8.7	11	17.5	
	Heating	47 °F A	6.9	8.7	13	17	
Power Consumption in Stand-by mode		W	12	20	20	20	
Net Dimension (WxHxD)		inch	33-7/8x26-3/8x12-1/4	37-3/8x33x13-3/8	37-3/8x41-3/8x13-3/8	37-3/8x41-3/8x13-3/8	
Net Weight		lbs	116.8	158.7	188.5	198.4	
Package Dimension (WxDxH)		inch	39x17-3/4x28-3/4	43-3/4x18-1/8x36-1/4	43-3/4x18-1/8x47-1/4	43-3/4x18-1/8x47-1/4	
Gross Weight		lbs	125.6	169.5	220.5	224.5	
Piping	Diameter(Liquid)	inch	1/4	1/4	1/4	1/4	
	Diameter(Gas)	inch	3/8	3/8	3/8	3/8	
	Max Length(Each)	ft	82	66	66	66	
	Max Length( Total)	ft	164	197	246	262	
	Max Height	ft	49	49	49	49	
Refrigerant Charge		oz	63.49	81.13	105.82	120	
Additional refrigerant		oz/ft	0.161oz/ft over 49ft	0.161oz/ft over 74ft	0.161oz/ft over 98ft	0.161oz/ft over 123ft	





## Smart Control Technology

*Automatic distribution of refrigerant to each indoor unit to balance the cooling or heating capacity for each room. This allows better comfort at different desired temperatures.*

## Hyper Heat

*Hyper Heat assures consistent comfort specialized for extreme climates. Condenser heat output capacity allows the unit to work efficiently as a primary heat source, even when temperature drops to -13°F*



## Mix and Match

*Mix and match different types of indoor units which include high wall mounts, cassettes, or ducted units.*





# HI-WALL



## 4-WAY AIRFLOW

4-Way Air Flow allows for air movement in horizontal or vertical position for complete area coverage

## WIFI CAPABLE

Control your Innovair system from anywhere with wifi access. The system will respond to multiple features from any iOS or Android device, allowing you complete control when away.

\*Select systems are compatible with Amazon Alexa and Google Home.



## SLEEP MODE

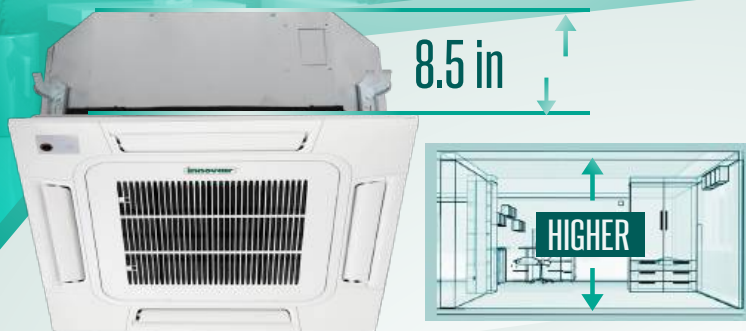
One click to limit the maximum frequency current while still maintain the room temperature within the optimal temperature, guarantee a cool night sleep with maximum energy saving.

Model Name		VWM10H7F7	VWM13H7F7	VWM18H7F7	VWM24H7F7
Cooling capacity	Btu/h	9000	12000	18000	23400
Heating capacity	Btu/h	9500	13000	19000	26000
Power	V/Hz/Ph	208/230 50/60 1	208/230 50/60 1	208/230 50/60 1	208/230 50/60 1
Output power	W	25	25	35	35
Rated current	A	0.11	0.11	0.17	0.17
Degrees of protection		IPX0	IPX0	IPX0	IPX0
Air flow	CFM	341	365	647	706
Noise Level (Sound Pressure)	dB(A)	39/35/30	39/35/30	45/41/37	47/45/42
Net Dimension (WxHxD)	inch	37 3/8 x 10 3/4 x 8 1/8	37 3/8 x 10 3/4 x 8 1/8	48 x 12 5/8 x 9 1/4	48 x 12 5/8 x 9 1/4
Package Dimension (WxHxD)	inch	39 3/8 x 13 3/16 x 6 3/8	39 3/8 x 13 3/16 x 6 3/8	51 3/4 x 15 7/16 x 12 1/2	51 3/4 x 15 7/16 x 12 1/2
Net/Gross Weight	lbs	19.8 / 24.3	19.8 / 24.3	32.0 / 37.5	32.0 / 37.5
Diameter(Liquid)	inch	1/4	1/4	1/4	3/8
Diameter(Gas)	inch	3/8	3/8	1/2	5/8





# CASSETTE



## COMPACT DESIGN

*Slim design with body thickness of 8.5 inches (215mm) and the installation thickness of 9.6 inches (245mm) reducing the ceiling height requirement.*

## 360° Round Flow

*360° Round Flow offers optimum efficiency and comfort with a full-flat panel and micro-channel design allowing smooth air supply.*



## FRESH AIR INTAKE

*Fresh air intake introduces outdoor fresh air into the room to improve air quality.*

Model Name		VCM10H7F7	VCM13H7F7	VCM18H7F7	VCM24H7F7
Cooling capacity	Btu/h	9000	12000	18000	24000
Heating capacity	Btu/h	10200	13500	19000	27000
Power	V/Hz/Ph	208/230 50/60 1	208/230 50/60 1	208/230 50/60 1	208/230 50/60 1
Output power	W	57	57	80	80
Rated current	A	0,25	0,25	0.40	0.40
Anti electric shock		Class I	Class I	Class I	Class I
Degrees of protection		IPX4	IPX4	IPX4	IPX4
Air flow	CFM	306	353	559	647
Noise Level (Sound Pressure)	dB(A)	38/34/31	42/37/33	38/36/34	44/40/38
Net Body Dimension (WxHxD)	inch	22 7/16 x 8 7/16 x 22 7/16	22 7/16 x 8 7/16 x 22 7/16	33 x 9 3/4 x 33	33 x 9 3/4 x 33
Net Panel Dimensions (WxHxD)	inch	24 1/2 x 1 5/8 x 24 1/2	24 1/2 x 1 5/8 x 24 1/2	37 1/2 x 1 3/4 x 37 1/2	37 1/2 x 1 3/4 x 37 1/2
Package Dimension (WxHxD)	inch	28 3/4 x 11 1/2 x 26 5/16	28 3/4 x 11 1/2 x 26 5/16	39 1/4 x 37 1/16 x 14 9/16	39 1/4 x 37 1/16 x 14 9/16
Net/Gross Body Weight	lbs	32.0 / 38.5	34.0 / 40.5	56.0 / 74.0	59.5 / 79.5
Diameter(Liquid)	inch	1/4	1/4	1/4	3/8
Diameter(Gas)	inch	3/8	3/8	1/2	5/8

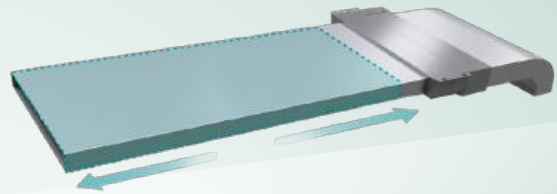


# DUCT TYPE



## MEDIUM STATIC DUCT

*External static pressure makes unit applicable for a wide range of project applications*

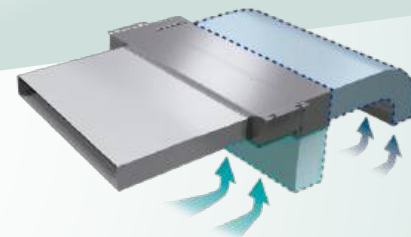


## SLIM DESIGN

*The slim duct unit with a thickness of only 7.5in (190mm), makes it applicable for narrow ceiling spaces.*

## FLEXIBLE INSTALLATION

*Air suction direction can be altered from rear to bottom suction, giving a choice for multiple types of applications*



Slim Duct Indoor Unit		VTM10H25	VTM13H25	VTM18H25	VTM24H25
Nominal Capacity - Cooling	Btu/h	8,500	12,000	15,000	24,000
Nominal Capacity - Heating	Btu/h	10,000	13,000	19,000	27,000
Power Supply	V/Hz/Ph	1Ph/208~230V/60HzV	1Ph/208~230V/60Hz	1Ph/208~230V/60Hz	1Ph/208~230V/60Hz
Airflow- H/M/L	CFM	265/175/150	395/235/180	415/353/295	590/445/325
External Static Pressure	Pa	0~50	0~50	0~50	25~100
Moisture Removal	L/Hr	0.8	1.4	1.8	2.0
Sound Pressure Level - H/M/L	db (A)	37/31	39/32	41/33	42/43
Unit Dimension (WxHxD)	inches	27 ½ x 24 x 8	27 ½ x 24 x 8	35 ½ x 24 x 8	43 ½ x 24 x 8
Package Dimension (WxHxD)	inches	35 x 29 x 12	35 x 29 x 12	44 x 29 x 12	52 x 29 x 12
Net/Gross Weight	lbs	48.5/60	51/64	60/79	68/90
Piping Connections (Gas/Suction)	inches	φ3/8	φ3/8	φ1/2	φ5/8
Piping Connections (Liquid)	inches	φ1/4	φ1/4	φ1/4	φ3/8

Outdoor Model	Outdoor Connections	Combination Allowance			
		Two Units	Three Units	Four Units	Five Units
VOM18H7R2	2 Pipe	09+09			
		09+12			
		12+12			
VOM24H7R3	3 Pipe	09+09	09+09+09		
		09+12	09+09+12		
		12+12	09+09+18		
		09+18	09+12+12		
		12+12	12+12+12		
		12+18			
		18+18			
		24+24			
VOM36H7R4	4 Pipe	09+18	09+09+09	09+09+09+09	
		12+12	09+09+12	09+09+09+12	
		12+12	09+09+18	09+09+09+18	
		12+18	09+09+24	09+09+09+24	
		18+18	09+12+12	09+09+12+12	
		18+24	09+12+18	09+09+12+18	
		24+24	09+12+24	09+09+12+24	
			09+18+24	09+12+12+12	
			12+12+12	09+12+12+18	
			12+12+18	12+12+12+12	
			12+12+24	12+12+12+18	
			12+18+24		
VOM48H7R5	5 Pipe	18+18	09+09+18	09+09+09+09	9+9+9+9+9
		18+24	09+09+24	09+09+09+12	9+9+9+9+12
		24+24	09+12+12	09+09+09+18	9+9+9+9+18
			09+12+18	09+09+09+24	9+9+9+12+12
			09+12+24	09+09+12+12	9+9+12+12+12
			09+18+24	09+09+12+18	
			12+12+12	09+09+12+24	
			12+12+18	09+12+12+12	
			12+12+24	09+12+12+18	
			12+18+24	12+12+12+12	
				12+12+12+18	
<b>Note:</b>					

• If total load of indoor units exceeds nominal capacity of outdoor unit, the practical output capacity of every indoor unit will be attenuated correspondingly.  
This is most evident in heating mode.

• Outdoor Unit Capacity 0.66 ≤ Indoor Unit Capacity ≤ Outdoor Unit Capacity 1.33



 **innovair**®

[www.innovair.com](http://www.innovair.com)